

**Product Name: Cleaved-Caspase 3 p12 Rabbit
Monoclonal Antibody
Catalog #: AMRe01762**

Summary

Production Name	Cleaved-Caspase 3 p12 Rabbit Monoclonal Antibody
Description	Recombinant Rabbit Monoclonal antibody
Host	Rabbit
Application	WB,ICC/IF
Reactivity	Human,Mouse,Rat

Performance

Conjugation	Unconjugated
Modification	Cleaved
Isotype	IgG
Clonality	Monoclonal Antibody
Form	Liquid
Storage	Store at 4°C short term. Aliquot and store at -20°C long term. Avoid freeze/thaw cycles.
Buffer	50mM Tris-Glycine(pH 7.4), 0.15M NaCl, 40% Glycerol, 0.01% Sodium azide and 0.05% BSA
Purification	Affinity Purified

Immunogen

Gene Name	CASP3
Alternative Names	CASP3; CPP32; Caspase-3; CASP-3; Apopain; Cysteine protease CPP32; CPP-32; Protein Yama; SREBP cleavage activity 1; SCA-1
Gene ID	836
SwissProt ID	P42574

Application

Dilution Ratio	WB: 1/500-1/1000 IF: 1/50-1/200
Molecular Weight	Calculated MW: 32 kDa; Observed MW: 32,12 kDa

**Product Name: Cleaved-Caspase 3 p12 Rabbit
Monoclonal Antibody
Catalog #: AMRe01762**



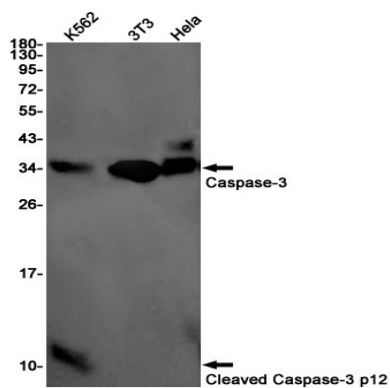
Background

Sequential activation of caspases plays a central role in the execution-phase of cell apoptosis. Caspases exist as inactive proenzymes which undergo proteolytic processing at conserved aspartic residues to produce 2 subunits, large and small, that dimerize to form the active enzyme.

Research Area

Cell Biology

Image Data



Western blot analysis of Caspase3 p12 in K562, 3T3, HeLa lysates using Cleaved-Caspase 3 p12 antibody.

Note

For research use only.