

**Product Name: Phospho-ATF2 (Thr71) Rabbit
Monoclonal Antibody
Catalog #: AMRe01687**

Summary

Production Name	Phospho-ATF2 (Thr71) Rabbit Monoclonal Antibody
Description	Recombinant Rabbit Monoclonal antibody
Host	Rabbit
Application	WB, ICC/IF, IP
Reactivity	Human, Mouse

Performance

Conjugation	Unconjugated
Modification	Phosphorylated
Isotype	IgG
Clonality	Monoclonal Antibody
Form	Liquid
Storage	Store at 4°C short term. Aliquot and store at -20°C long term. Avoid freeze/thaw cycles.
Buffer	50mM Tris-Glycine (pH 7.4), 0.15M NaCl, 40% Glycerol, 0.01% Sodium azide and 0.05% BSA
Purification	Affinity Purified

Immunogen

Gene Name	ATF2
Alternative Names	ATF2; CREB2; CREBP1; Cyclic AMP-dependent transcription factor ATF-2; cAMP-dependent transcription factor ATF-2; Activating transcription factor 2; Cyclic AMP-responsive element-binding protein 2; CREB-2; cAMP-responsive element-binding pro
Gene ID	1386
SwissProt ID	P15336

Application

Dilution Ratio	WB: 1/500-1/1000 IF: 1/50-1/200 IP: 1/20
Molecular Weight	Calculated MW: 55 kDa; Observed MW: 70 kDa

**Product Name: Phospho-ATF2 (Thr71) Rabbit
Monoclonal Antibody**
Catalog #: AMRe01687



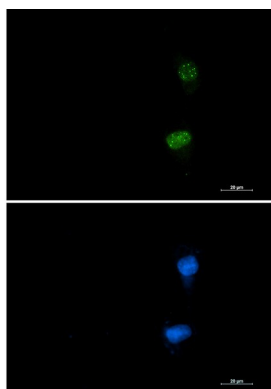
Background

This gene encodes a transcription factor that is a member of the leucine zipper family of DNA binding proteins. This protein binds to the cAMP-responsive element (CRE), an octameric palindrome. The protein forms a homodimer or heterodimer with c-Jun and stimulates CRE-dependent transcription. The protein is also a histone acetyltransferase (HAT) that specifically acetylates histones H2B and H4 in vitro;

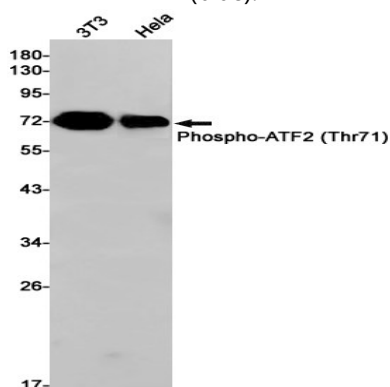
Research Area

Epigenetics and Nuclear Signaling

Image Data



Immunocytochemistry analysis of Phospho-ATF2 (Thr71) (green) in U87-MG using Phospho-ATF2 (Thr71) antibody, and DAPI(blue).



Western blot analysis of Phospho-ATF2 (Thr71) in 3T3, HeLa lysates using Phospho-ATF2 (Thr71) antibody.

Note



**Product Name: Phospho-ATF2 (Thr71) Rabbit
Monoclonal Antibody
Catalog #: AMRe01687**

For research use only.