

## Summary

<b>Production Name</b>	ASH2L Rabbit Monoclonal Antibody
<b>Description</b>	Recombinant Rabbit Monoclonal antibody
<b>Host</b>	Rabbit
<b>Application</b>	WB,IHC-F,IHC-P,ICC/IF
<b>Reactivity</b>	Human,Mouse,Rat

## Performance

<b>Conjugation</b>	Unconjugated
<b>Modification</b>	Unmodified
<b>Isotype</b>	IgG
<b>Clonality</b>	Monoclonal Antibody
<b>Form</b>	Liquid
<b>Storage</b>	Store at 4°C short term. Aliquot and store at -20°C long term. Avoid freeze/thaw cycles.
<b>Buffer</b>	50mM Tris-Glycine(pH 7.4), 0.15M NaCl, 40% Glycerol, 0.01% Sodium azide and 0.05% BSA
<b>Purification</b>	Affinity Purified

## Immunogen

<b>Gene Name</b>	ASH2L
<b>Alternative Names</b>	ASH2; Bre2; ASH2L1; ASH2L2
<b>Gene ID</b>	9070
<b>SwissProt ID</b>	Q9UBL3

## Application

<b>Dilution Ratio</b>	WB: 1/500-1/1000 IHC: 1/50-1/100 IF: 1/50-1/200
<b>Molecular Weight</b>	Calculated MW: 69 kDa; Observed MW: 80 kDa

## Background

**Product Name: ASH2L Rabbit Monoclonal Antibody**  
**Catalog #: AMRe01682**

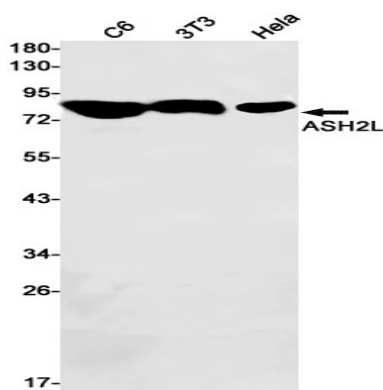


Component of the Set1/Ash2 histone methyltransferase (HMT) complex, a complex that specifically methylates 'Lys-4' of histone H3, but not if the neighboring 'Lys-9' residue is already methylated. As part of the MLL1/MLL complex it is involved in methylation and dimethylation at 'Lys-4' of histone H3. May function as a transcriptional regulator. May play a role in hematopoiesis.

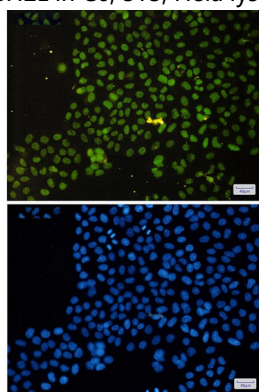
## Research Area

Epigenetics and Nuclear Signaling

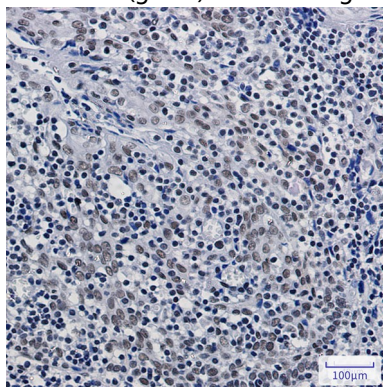
## Image Data



Western blot analysis of ASH2L in C6, 3T3, HeLa lysates using ASH2L antibody.



Immunocytochemistry analysis of ASH2L(green) in HeLa using ASH2L antibody, and DAPI(blue)



**Product Name: ASH2L Rabbit Monoclonal Antibody**  
**Catalog #: AMRe01682**

---



Immunohistochemistry analysis of paraffin-embedded Human tonsil using ASH2L antibody. High-pressure and temperature Sodium Citrate pH 6.0 was used for antigen retrieval.

**Note**

For research use only.