

Product Name: Aquaporin 1 Rabbit Monoclonal Antibody
Catalog #: AMRe01668



Summary

Production Name	Aquaporin 1 Rabbit Monoclonal Antibody
Description	Recombinant Rabbit Monoclonal antibody
Host	Rabbit
Application	WB,IHC-P
Reactivity	Human,Rat

Performance

Conjugation	Unconjugated
Modification	Unmodified
Isotype	IgG
Clonality	Monoclonal Antibody
Form	Liquid
Storage	Store at 4°C short term. Aliquot and store at -20°C long term. Avoid freeze/thaw cycles.
Buffer	50mM Tris-Glycine(pH 7.4), 0.15M NaCl, 40% Glycerol, 0.01% Sodium azide and 0.05% BSA
Purification	Affinity Purified

Immunogen

Gene Name	AQP1
Alternative Names	AQP1; CHIP28; Aquaporin-1; AQP-1; Aquaporin-CHIP; Urine water channel; Water channel protein for red blood cells and kidney proximal tubule
Gene ID	358
SwissProt ID	P29972

Application

Dilution Ratio	WB: 1/500-1/1000 IHC: 1/50-1/100
Molecular Weight	Calculated MW: 29 kDa; Observed MW: 29 kDa

Product Name: Aquaporin 1 Rabbit Monoclonal Antibody
Catalog #: AMRe01668



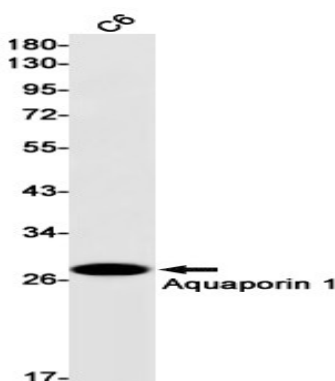
Background

Forms a water-specific channel that provides the plasma membranes of red cells and kidney proximal tubules with high permeability to water, thereby permitting water to move in the direction of an osmotic gradient.

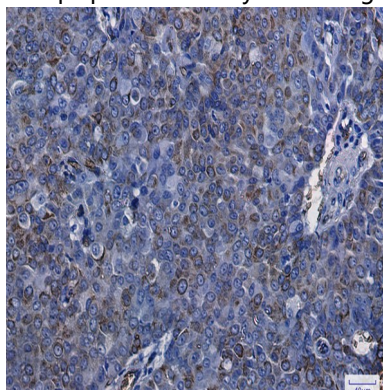
Research Area

Cell Biology

Image Data



Western blot analysis of Aquaporin 1 in C6 lysates using Aquaporin 1 antibody.



Immunohistochemistry analysis of paraffin-embedded Human breast cancer using Aquaporin 1 antibody. High-pressure and temperature Sodium Citrate pH 6.0 was used for antigen retrieval.

Note

For research use only.