

**Product Name:** alpha Synuclein Rabbit Monoclonal Antibody  
**Catalog #:** AMRe01639

---

## Summary

<b>Production Name</b>	alpha Synuclein Rabbit Monoclonal Antibody
<b>Description</b>	Recombinant Rabbit Monoclonal antibody
<b>Host</b>	Rabbit
<b>Application</b>	WB,IHC-P,IP
<b>Reactivity</b>	Human,Rat

## Performance

<b>Conjugation</b>	Unconjugated
<b>Modification</b>	Unmodified
<b>Isotype</b>	IgG
<b>Clonality</b>	Monoclonal Antibody
<b>Form</b>	Liquid
<b>Storage</b>	Store at 4°C short term. Aliquot and store at -20°C long term. Avoid freeze/thaw cycles.
<b>Buffer</b>	50mM Tris-Glycine(pH 7.4), 0.15M NaCl, 40% Glycerol, 0.01% Sodium azide and 0.05% BSA
<b>Purification</b>	Affinity Purified

## Immunogen

<b>Gene Name</b>	SNCA
<b>Alternative Names</b>	SNCA; NACP; PARK1; Alpha-synuclein; Non-A beta component of AD amyloid; Non-A4 component of amyloid precursor; NACP
<b>Gene ID</b>	6622
<b>SwissProt ID</b>	P37840

## Application

<b>Dilution Ratio</b>	WB: 1/500-1/1000 IHC: 1/50-1/100 IP: 1/20
<b>Molecular Weight</b>	Calculated MW: 14 kDa; Observed MW: 18 kDa

**Product Name: alpha Synuclein Rabbit Monoclonal Antibody**  
**Catalog #: AMRe01639**

---



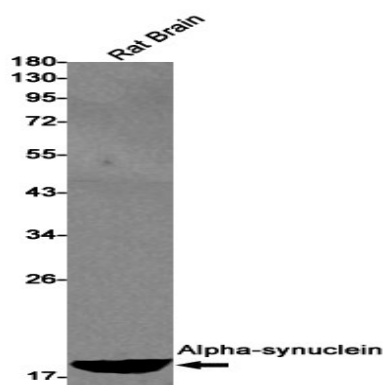
## Background

May be involved in the regulation of dopamine release and transport. Induces fibrillization of microtubule-associated protein tau. Reduces neuronal responsiveness to various apoptotic stimuli, leading to a decreased caspase-3 activation. Genetic alterations of SNCA resulting in aberrant polymerization into fibrils, are associated with several neurodegenerative diseases (synucleinopathies).

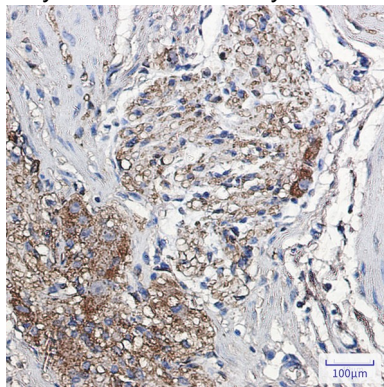
## Research Area

Neuroscience

## Image Data



Western blot analysis of Alphasynuclein in rat Brain lysates using alpha Synuclein antibody.



Immunohistochemistry analysis of paraffin-embedded Human colon cancer using Alphasynuclein antibody. High-pressure and temperature Sodium Citrate pH 6.0 was used for antigen retrieval.

## Note

For research use only.