

**Product Name: ALDH7A1 Rabbit Monoclonal Antibody**  
**Catalog #: AMRe01626**



## Summary

<b>Production Name</b>	ALDH7A1 Rabbit Monoclonal Antibody
<b>Description</b>	Recombinant Rabbit Monoclonal antibody
<b>Host</b>	Rabbit
<b>Application</b>	WB,ICC/IF,IP
<b>Reactivity</b>	Human,Mouse

## Performance

<b>Conjugation</b>	Unconjugated
<b>Modification</b>	Unmodified
<b>Isotype</b>	IgG
<b>Clonality</b>	Monoclonal Antibody
<b>Form</b>	Liquid
<b>Storage</b>	Store at 4°C short term. Aliquot and store at -20°C long term. Avoid freeze/thaw cycles.
<b>Buffer</b>	50mM Tris-Glycine(pH 7.4), 0.15M NaCl, 40% Glycerol, 0.01% Sodium azide and 0.05% BSA
<b>Purification</b>	Affinity Purified

## Immunogen

<b>Gene Name</b>	ALDH7A1
<b>Alternative Names</b>	aldehyde dehydrogenase 7 family member A1; EPD; PDE; ATQ1
<b>Gene ID</b>	501
<b>SwissProt ID</b>	P49419

## Application

<b>Dilution Ratio</b>	WB: 1/500-1/1000 IF: 1/50-1/200 IP: 1/20
<b>Molecular Weight</b>	Calculated MW: 58 kDa; Observed MW: 58 kDa

## Background

**Product Name: ALDH7A1 Rabbit Monoclonal Antibody**  
**Catalog #: AMRe01626**

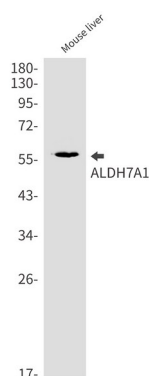


Multifunctional enzyme mediating important protective effects. Metabolizes betaine aldehyde to betaine, an important cellular osmolyte and methyl donor. Protects cells from oxidative stress by metabolizing a number of lipid peroxidation-derived aldehydes. Involved in lysine catabolism.

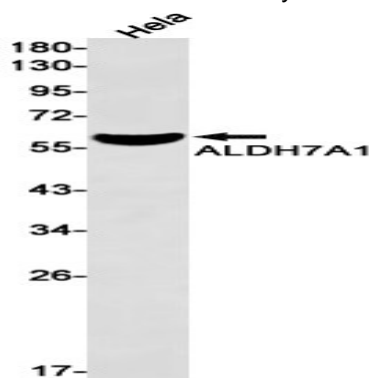
## Research Area

Signal Transduction

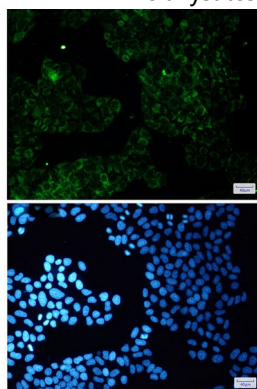
## Image Data



Western blot analysis of ALDH7A1 in mouse liver lysates using ALDH7A1 antibody.



Western blot analysis of ALDH7A1 in HeLa lysates using ALDH7A1 antibody.



Immunocytochemistry analysis of ALDH7A1(green) in HeLa using ALDH7A1 antibody, and DAPI(blue)

**Product Name: ALDH7A1 Rabbit Monoclonal Antibody**  
**Catalog #: AMRe01626**

---



**Note**

For research use only.