

## Summary

<b>Production Name</b>	eIF5A Rabbit Monoclonal Antibody
<b>Description</b>	Recombinant Rabbit Monoclonal antibody
<b>Host</b>	Rabbit
<b>Application</b>	WB,IHC-P,IP
<b>Reactivity</b>	Human,Mouse,Rat

## Performance

<b>Conjugation</b>	Unconjugated
<b>Modification</b>	Unmodified
<b>Isotype</b>	IgG
<b>Clonality</b>	Monoclonal Antibody
<b>Form</b>	Liquid
<b>Storage</b>	Store at 4°C short term. Aliquot and store at -20°C long term. Avoid freeze/thaw cycles.
<b>Buffer</b>	50mM Tris-Glycine(pH 7.4), 0.15M NaCl, 40% Glycerol, 0.01% Sodium azide and 0.05% BSA
<b>Purification</b>	Affinity Purified

## Immunogen

<b>Gene Name</b>	EIF5A
<b>Alternative Names</b>	EIF-5A; EIF5A1; eIF5AI; Eukaryotic initiation factor 5A
<b>Gene ID</b>	1984
<b>SwissProt ID</b>	P63241

## Application

<b>Dilution Ratio</b>	WB: 1/500-1/1000 IHC: 1/50-1/100 IP: 1/20
<b>Molecular Weight</b>	Calculated MW: 17 kDa; Observed MW: 17 kDa

## Background

**Product Name: eIF5A Rabbit Monoclonal Antibody**  
**Catalog #: AMRe01587**

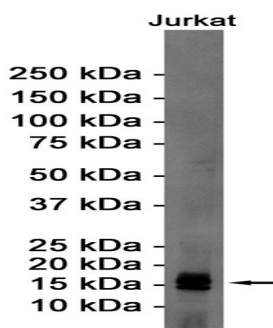


mRNA-binding protein involved in translation elongation. Has an important function at the level of mRNA turnover, probably acting downstream of decapping. Involved in actin dynamics and cell cycle progression, mRNA decay and probably in a pathway involved in stress response and maintenance of cell wall integrity. With syntenin SDCBP, functions as a regulator of p53/TP53 and p53/TP53-dependent apoptosis. Regulates also TNF-alpha-mediated apoptosis.

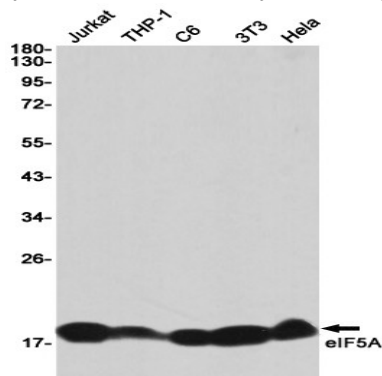
## Research Area

Epigenetics and Nuclear Signaling

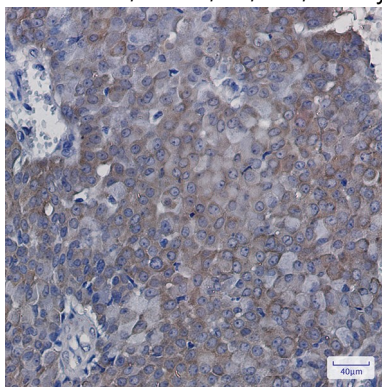
## Image Data



Western blot analysis of eIF5A in Jurkat lysates using eIF5A antibody.



Western blot analysis of eIF5A in Jurkat, THP-1, C6, 3T3, Hela lysates using eIF5A antibody.



**Product Name: eIF5A Rabbit Monoclonal Antibody**  
**Catalog #: AMRe01587**



---

Immunohistochemistry analysis of paraffin-embedded Human breast cancer using eIF5A antibody. High-pressure and temperature Sodium Citrate pH 6.0 was used for antigen retrieval.

**Note**

For research use only.