

**Product Name: alpha Skeletal Muscle Actin Rabbit  
Monoclonal Antibody  
Catalog #: AMRe01565**

---

## Summary

<b>Production Name</b>	alpha Skeletal Muscle Actin Rabbit Monoclonal Antibody
<b>Description</b>	Recombinant Rabbit Monoclonal antibody
<b>Host</b>	Rabbit
<b>Application</b>	WB,IHC-P,IP
<b>Reactivity</b>	Human

## Performance

<b>Conjugation</b>	Unconjugated
<b>Modification</b>	Unmodified
<b>Isotype</b>	IgG
<b>Clonality</b>	Monoclonal Antibody
<b>Form</b>	Liquid
<b>Storage</b>	Store at 4°C short term. Aliquot and store at -20°C long term. Avoid freeze/thaw cycles.
<b>Buffer</b>	50mM Tris-Glycine(pH 7.4), 0.15M NaCl, 40% Glycerol, 0.01% Sodium azide and 0.05% BSA
<b>Purification</b>	Affinity Purified

## Immunogen

<b>Gene Name</b>	ACTA1
<b>Alternative Names</b>	ACTA1; ACTA; Actin; alpha skeletal muscle; Alpha-actin-1
<b>Gene ID</b>	58
<b>SwissProt ID</b>	P68133

## Application

<b>Dilution Ratio</b>	WB: 1/500-1/1000 IHC: 1/50-1/100 IP: 1/20
<b>Molecular Weight</b>	Calculated MW: 42 kDa; Observed MW: 42 kDa

**Product Name: alpha Skeletal Muscle Actin Rabbit  
Monoclonal Antibody  
Catalog #: AMRe01565**

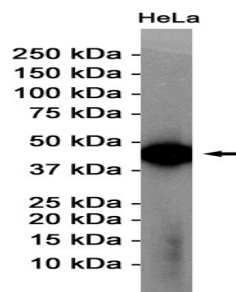
## Background

Actins are highly conserved proteins that are involved in various types of cell motility and are ubiquitously expressed in all eukaryotic cells.

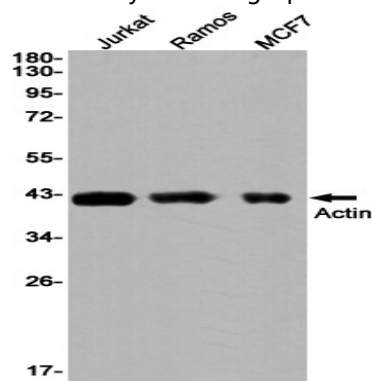
## Research Area

Signal Transduction

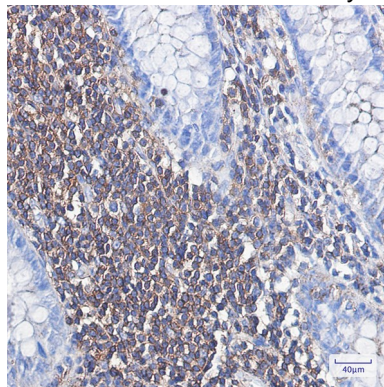
## Image Data



Western blot analysis of Actin in HeLa lysates using alpha Skeletal Muscle Actin antibody.



Western blot analysis of Actin in Jurkat, Ramos, MCF-7 lysates using Actin antibody.



**Product Name: alpha Skeletal Muscle Actin Rabbit  
Monoclonal Antibody  
Catalog #: AMRe01565**



---

Immunohistochemistry analysis of paraffin-embedded Human colon cancer using Actin antibody. High-pressure and temperature Sodium Citrate pH 6.0 was used for antigen retrieval.

**Note**

For research use only.