

**Product Name: Phospho-Nrf2 (Ser40) Rabbit
Monoclonal Antibody
Catalog #: AMRe01540**

Summary

| | |
|------------------------|---|
| Production Name | Phospho-Nrf2 (Ser40) Rabbit Monoclonal Antibody |
| Description | Recombinant Rabbit Monoclonal antibody |
| Host | Rabbit |
| Application | WB,IHC-P |
| Reactivity | Human |

Performance

| | |
|---------------------|--|
| Conjugation | Unconjugated |
| Modification | Phosphorylated |
| Isotype | IgG |
| Clonality | Monoclonal Antibody |
| Form | Liquid |
| Storage | Store at 4°C short term. Aliquot and store at -20°C long term. Avoid freeze/thaw cycles. |
| Buffer | 50mM Tris-Glycine(pH 7.4), 0.15M NaCl, 40% Glycerol, 0.01% Sodium azide and 0.05% BSA |
| Purification | Affinity Purified |

Immunogen

| | |
|--------------------------|--|
| Gene Name | NFE2L2 |
| Alternative Names | NFE2L2; NRF2; Nuclear factor erythroid 2-related factor 2; NF-E2-related factor 2; NFE2-related factor 2; HEBP1; Nuclear factor; erythroid derived 2; like 2 |
| Gene ID | 4780 |
| SwissProt ID | Q16236 |

Application

| | |
|-------------------------|---|
| Dilution Ratio | WB: 1/500-1/1000 IHC: 1/50-1/100 |
| Molecular Weight | Calculated MW: 68 kDa; Observed MW: 100 kDa |

**Product Name: Phospho-Nrf2 (Ser40) Rabbit
Monoclonal Antibody
Catalog #: AMRe01540**

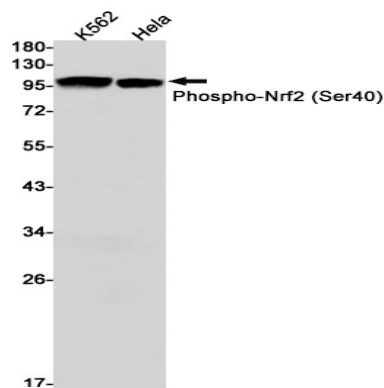
Background

Transcription activator that binds to antioxidant response (ARE) elements in the promoter regions of target genes. Important for the coordinated up-regulation of genes in response to oxidative stress. May be involved in the transcriptional activation of genes of the beta-globin cluster by mediating enhancer activity of hypersensitive site 2 of the beta-globin locus control region.

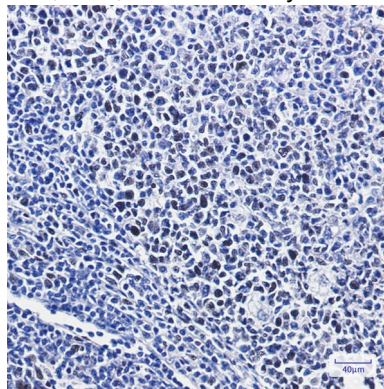
Research Area

Epigenetics and Nuclear Signaling

Image Data



Western blot analysis of Phospho-Nrf2 (Ser40) in K562, HeLa lysates using Phospho-Nrf2 (Ser40) antibody.



Immunohistochemistry analysis of paraffin-embedded Human tonsil using Nrf2 (Phospho- S40) antibody. High-pressure and temperature Sodium Citrate pH 6.0 was used for antigen retrieval.

Note

For research use only.