

Product Name: Glycophorin C Rabbit Monoclonal Antibody
Catalog #: AMRe01488

Summary

Production Name	Glycophorin C Rabbit Monoclonal Antibody
Description	Recombinant Rabbit Monoclonal antibody
Host	Rabbit
Application	WB,ICC/IF,IP
Reactivity	Human

Performance

Conjugation	Unconjugated
Modification	Unmodified
Isotype	IgG
Clonality	Monoclonal Antibody
Form	Liquid
Storage	Store at 4°C short term. Aliquot and store at -20°C long term. Avoid freeze/thaw cycles.
Buffer	50mM Tris-Glycine(pH 7.4), 0.15M NaCl, 40% Glycerol, 0.01% Sodium azide and 0.05% BSA
Purification	Affinity Purified

Immunogen

Gene Name	GYPC
Alternative Names	GYPC; CD236; CD236R; GE; GPC; GYPD
Gene ID	2995
SwissProt ID	P04921

Application

Dilution Ratio	WB: 1/500-1/1000 IF: 1/50-1/200 IP: 1/20
Molecular Weight	Calculated MW: 14 kDa; Observed MW: 43 kDa

Product Name: Glycophorin C Rabbit Monoclonal Antibody
Catalog #: AMRe01488

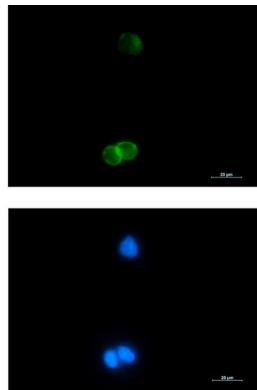
Background

This protein is a minor sialoglycoprotein in human erythrocyte membranes. The blood group Gerbich antigens and receptors for Plasmodium falciparum merozoites are most likely located within the extracellular domain.

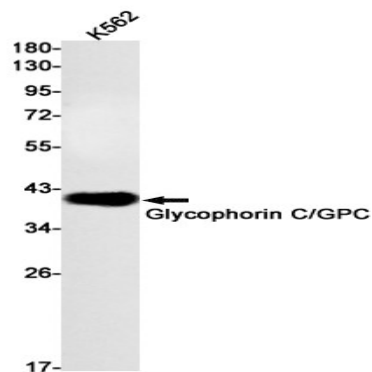
Research Area

Cardiovascular

Image Data



Immunocytochemistry analysis of Glycophorin C (green) in K562 using Glycophorin C antibody, and DAPI (blue).



Western blot analysis of Glycophorin C/GPC in K562 lysates using Glycophorin C/GPC antibody.

Note

For research use only.