

**Product Name: Rab5C Rabbit Monoclonal Antibody**  
**Catalog #: AMRe01470**



## Summary

<b>Production Name</b>	Rab5C Rabbit Monoclonal Antibody
<b>Description</b>	Recombinant Rabbit Monoclonal antibody
<b>Host</b>	Rabbit
<b>Application</b>	WB,IHC-F,IHC-P,ICC/IF
<b>Reactivity</b>	Human,Mouse,Rat

## Performance

<b>Conjugation</b>	Unconjugated
<b>Modification</b>	Unmodified
<b>Isotype</b>	IgG
<b>Clonality</b>	Monoclonal Antibody
<b>Form</b>	Liquid
<b>Storage</b>	Store at 4°C short term. Aliquot and store at -20°C long term. Avoid freeze/thaw cycles.
<b>Buffer</b>	50mM Tris-Glycine(pH 7.4), 0.15M NaCl, 40% Glycerol, 0.01% Sodium azide and 0.05% BSA
<b>Purification</b>	Affinity Purified

## Immunogen

<b>Gene Name</b>	RAB5C
<b>Alternative Names</b>	Ras-related protein Rab-5C; RABL; L1880; RAB5L; RAB5CL
<b>Gene ID</b>	5878
<b>SwissProt ID</b>	P51148

## Application

<b>Dilution Ratio</b>	WB: 1/500-1/1000 IHC: 1/50-1/100 IF: 1/50-1/200
<b>Molecular Weight</b>	Calculated MW: 23 kDa; Observed MW: 23 kDa

## Background

**Product Name: Rab5C Rabbit Monoclonal Antibody**  
**Catalog #: AMRe01470**

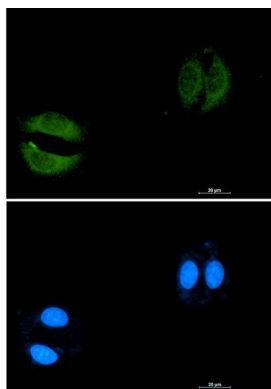


Protein transport.

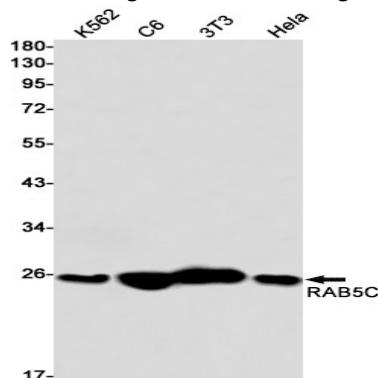
## Research Area

Signal Transduction

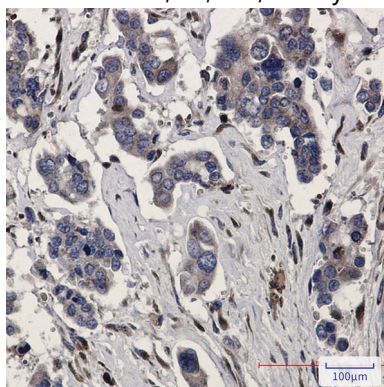
## Image Data



Immunocytochemistry analysis of Rab5C (green) in A549 using Rab5C antibody, and DAPI (blue).



Western blot analysis of RAB5C in K562, C6, 3T3, HeLa lysates using RAB5C antibody.



Immunohistochemistry analysis of paraffin-embedded Human Cholangiocarcinoma using RAB5C antibody. High-pressure and temperature Sodium Citrate pH 6.0 was used for antigen retrieval.

**Product Name: Rab5C Rabbit Monoclonal Antibody**  
**Catalog #: AMRe01470**

---



**Note**

For research use only.