

Summary

Production Name	CD13 Rabbit Monoclonal Antibody
Description	Recombinant Rabbit Monoclonal antibody
Host	Rabbit
Application	WB,IHC-F,IHC-P,ICC/IF,IP
Reactivity	Human,Rat

Performance

Conjugation	Unconjugated
Modification	Unmodified
Isotype	IgG
Clonality	Monoclonal Antibody
Form	Liquid
Storage	Store at 4°C short term. Aliquot and store at -20°C long term. Avoid freeze/thaw cycles.
Buffer	50mM Tris-Glycine(pH 7.4), 0.15M NaCl, 40% Glycerol, 0.01% Sodium azide and 0.05% BSA
Purification	Affinity Purified

Immunogen

Gene Name	ANPEP
Alternative Names	ANPEP; APN; CD13; PEPN; Aminopeptidase N; AP-N; hAPN; Alanyl aminopeptidase; Aminopeptidase M; AP-M; Microsomal aminopeptidase; Myeloid plasma membrane glycoprotein CD13; gp150; CD antigen CD13
Gene ID	290
SwissProt ID	P15144

Application

Dilution Ratio	WB: 1/500-1/1000 IHC: 1/50-1/100 IF: 1/50-1/200 IP: 1/20
Molecular Weight	Calculated MW: 110 kDa; Observed MW: 160 kDa

Product Name: CD13 Rabbit Monoclonal Antibody
Catalog #: AMRe01462



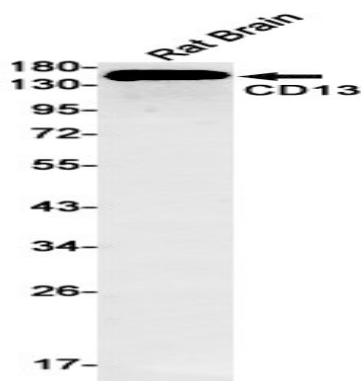
Background

Aminopeptidase N (APN, CD13) is a widely expressed, membrane-bound proteolytic enzyme that breaks down peptides during digestion, cleaves cell surface antigens during antigen presentation, and acts as a receptor for human viruses, including several coronaviruses. Plays a role in the final digestion of peptides generated from hydrolysis of proteins by gastric and pancreatic proteases.

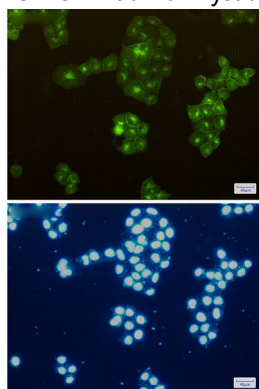
Research Area

Immunology

Image Data

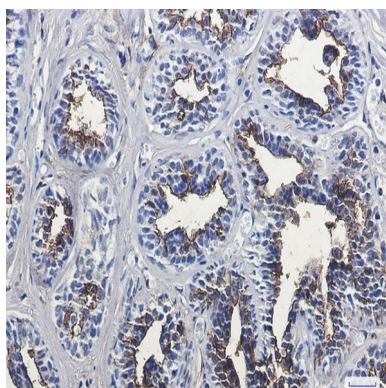


Western blot analysis of CD13 in rat Brain lysates using CD13 antibody.



Immunocytochemistry analysis of CD13(green) in Hela using CD13 antibody, and DAPI(blue)

Product Name: CD13 Rabbit Monoclonal Antibody
Catalog #: AMRe01462



Immunohistochemistry analysis of paraffin-embedded Human breast cancer using CD13 antibody. High-pressure and temperature Sodium Citrate pH 6.0 was used for antigen retrieval.

Note

For research use only.