

Product Name: Menin Rabbit Monoclonal Antibody
Catalog #: AMRe01449



Summary

Production Name	Menin Rabbit Monoclonal Antibody
Description	Recombinant Rabbit Monoclonal antibody
Host	Rabbit
Application	WB,IP
Reactivity	Human,Rat

Performance

Conjugation	Unconjugated
Modification	Unmodified
Isotype	IgG
Clonality	Monoclonal Antibody
Form	Liquid
Storage	Store at 4°C short term. Aliquot and store at -20°C long term. Avoid freeze/thaw cycles.
Buffer	50mM Tris-Glycine(pH 7.4), 0.15M NaCl, 40% Glycerol, 0.01% Sodium azide and 0.05% BSA
Purification	Affinity Purified

Immunogen

Gene Name	MEN1
Alternative Names	MEN1; SCG2; Menin
Gene ID	4221
SwissProt ID	O00255

Application

Dilution Ratio	WB: 1/500-1/1000 IP: 1/20
Molecular Weight	Calculated MW: 68 kDa; Observed MW: 68 kDa

Background

Product Name: Menin Rabbit Monoclonal Antibody
Catalog #: AMRe01449

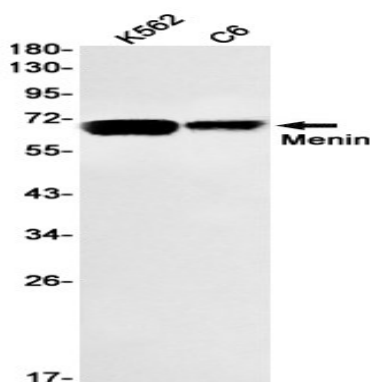


Menin, the protein product of the MEN1 gene, is a component of the mixed-lineage leukemia protein (MLL)-containing histone methyltransferase complex that facilitates methylation of histone H3 Lys4 to promote transcriptional activation. Menin functions to suppress proliferation of pancreatic islet cells, at least in part through MLL-mediated activation of the p18INK4c (p18) and p27CIP/KIP (p27) cyclin-dependent kinase inhibitor genes.

Research Area

Epigenetics and Nuclear Signaling

Image Data



Western blot analysis of Menin in K562, C6 lysates using Menin antibody.

Note

For research use only.