

Product Name: LC3B(9H5)Mouse Monoclonal Antibody
Catalog #: AMM13242



Summary

Production Name	LC3B(9H5)Mouse Monoclonal Antibody
Description	Mouse Monoclonal Antibody
Host	Mouse
Application	WB,ELISA
Reactivity	Human,Bovine

Performance

Conjugation	Unconjugated
Modification	Unmodified
Isotype	IgG
Clonality	Monoclonal
Form	Liquid
Storage	Store at 4°C short term. Aliquot and store at -20°C long term. Avoid freeze/thaw cycles.
Buffer	Liquid in PBS containing 50% glycerol, 0.5% BSA and 0.02% New type preservative N.
Purification	Affinity purification

Immunogen

Gene Name	MAP1LC3B
Alternative Names	MAP1LC3B
Gene ID	81631.0
SwissProt ID	Q9GZQ8.Recombinant Protein of LC3B of MAP1LC3B

Application

Dilution Ratio	IHC 1:50-300; ELISA 2000-20000
Molecular Weight	14,16kD

Background

The product of this gene is a subunit of neuronal microtubule-associated MAP1A and MAP1B proteins, which are involved in microtubule assembly and important for neurogenesis. Studies on the rat homolog implicate a role for this gene in

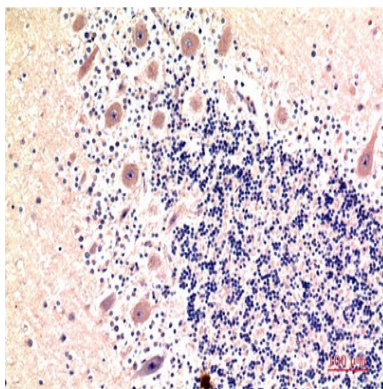
Product Name: LC3B(9H5)Mouse Monoclonal Antibody
Catalog #: AMM13242



autophagy, a process that involves the bulk degradation of cytoplasmic component. [provided by RefSeq, Jul 2008],caution:PubMed:12740394 has shown that the protein is cleaved at Lys-122 but PubMed:15355958 has shown that the cleavage site is at Gly-120 as in other mammalian orthologs.,function:Probably involved in formation of autophagosomal vacuoles (autophagosomes),.PTM:The precursor molecule is cleaved by APG4B/ATG4B to form LC3-I. This is activated by APG7L/ATG7, transferred to ATG3 and conjugated to phospholipid to form LC3-II.,similarity:Belongs to the MAP1 LC3 family.,subcellular location:LC3-II binds to the autophagic membranes.,subunit:3 different light chains, LC1, LC2 and LC3, can associate with MAP1A and MAP1B proteins.,tissue specificity:Most abundant in heart, brain, skeletal muscle and testis. Little expression observed in liver.,

Research Area

Image Data



Immunohistochemical analysis of paraffin-embedded Human Brain Tissue using LC3B Mouse mAb diluted at 1:200.

Note

For research use only.