

## Summary

<b>Production Name</b>	Bcl2 (3H5) Mouse Monoclonal Antibody
<b>Description</b>	Primary antibody
<b>Host</b>	Mouse
<b>Application</b>	WB,IHC-F,IHC-P,ICC/IF
<b>Reactivity</b>	Chicken,Human

## Performance

<b>Conjugation</b>	Unconjugated
<b>Modification</b>	Unmodified
<b>Isotype</b>	IgG1
<b>Clonality</b>	Monoclonal Antibody
<b>Form</b>	Liquid
<b>Storage</b>	Store at 4°C short term. Aliquot and store at -20°C long term. Avoid freeze/thaw cycles.
<b>Buffer</b>	Liquid in PBS containing 50% glycerol, 0.5% BSA and 0.02% sodium azide, pH 7.3.
<b>Purification</b>	Affinity Purified

## Immunogen

<b>Gene Name</b>	BCL2
<b>Alternative Names</b>	BCL2; Apoptosis regulator Bcl-2
<b>Gene ID</b>	596
<b>SwissProt ID</b>	P10415

## Application

<b>Dilution Ratio</b>	WB: 1/500-1/1000 IHC: 1/50-1/100 IF: 1/50-1/200
<b>Molecular Weight</b>	Calculated MW: 26 kDa; Observed MW: 26 kDa

## Background

This gene encodes an integral outer mitochondrial membrane protein that blocks the apoptotic death of some cells such as

**Product Name: Bcl2 (3H5) Mouse Monoclonal Antibody**  
**Catalog #: AMM03878**

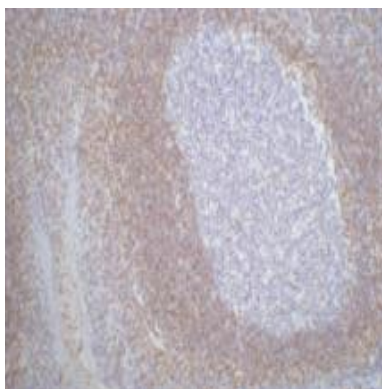


lymphocytes. Constitutive expression of BCL2, such as in the case of translocation of BCL2 to Ig heavy chain locus, is thought to be the cause of follicular lymphoma.

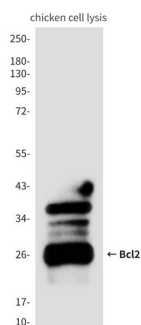
## Research Area

Cell Biology

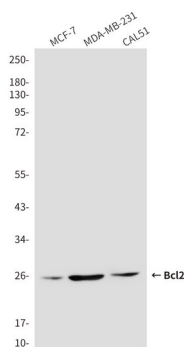
## Image Data



Immunohistochemistry analysis of paraffin-embedded Human tonsil tissue using Bcl2 (3H5) antibody. High-pressure and temperature Sodium Citrate pH 6.0 was used for antigen retrieval.

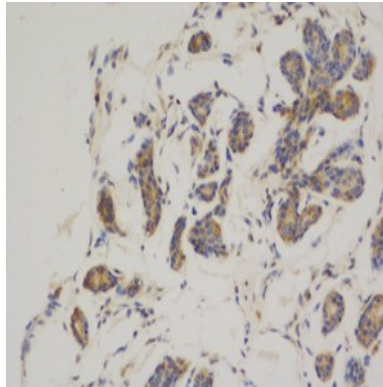


Western blot analysis of Bcl2 (3H5) in chicken lysates using Bcl2 (3H5) antibody



Western blot analysis of Bcl2 in Human breast cancer cell line MCF-7(A), MDAMB231(B) and Cal51(C) using Bcl2 antibody.

**Product Name: Bcl2 (3H5) Mouse Monoclonal Antibody**  
**Catalog #: AMM03878**



Immunohistochemistry analysis of paraffin-embedded Human breast cancer using Bcl2 antibody. High-pressure and temperature Sodium Citrate pH 6.0 was used for antigen retrieval.

**Note**

For research use only.