

**Product Name: Galectin 3 (4B2) Mouse Monoclonal Antibody**  
**Catalog #: AMM03864**

---

## Summary

<b>Production Name</b>	Galectin 3 (4B2) Mouse Monoclonal Antibody
<b>Description</b>	Primary antibody
<b>Host</b>	Mouse
<b>Application</b>	WB,IHC-F,IHC-P,ICC/IF
<b>Reactivity</b>	Human,Mouse

## Performance

<b>Conjugation</b>	Unconjugated
<b>Modification</b>	Unmodified
<b>Isotype</b>	IgG1
<b>Clonality</b>	Monoclonal Antibody
<b>Form</b>	Liquid
<b>Storage</b>	Store at 4°C short term. Aliquot and store at -20°C long term. Avoid freeze/thaw cycles.
<b>Buffer</b>	Liquid in PBS containing 50% glycerol, 0.5% BSA and 0.02% sodium azide, pH 7.3.
<b>Purification</b>	Affinity Purified

## Immunogen

<b>Gene Name</b>	LGALS3
<b>Alternative Names</b>	LGALS3
<b>Gene ID</b>	3958
<b>SwissProt ID</b>	P17931

## Application

<b>Dilution Ratio</b>	WB: 1/500-1/1000 IHC: 1/50-1/100 IF: 1/50-1/200
<b>Molecular Weight</b>	Calculated MW: 26 kDa; Observed MW: 26 kDa

## Background

---

**Product Name: Galectin 3 (4B2) Mouse Monoclonal Antibody**  
**Catalog #: AMM03864**

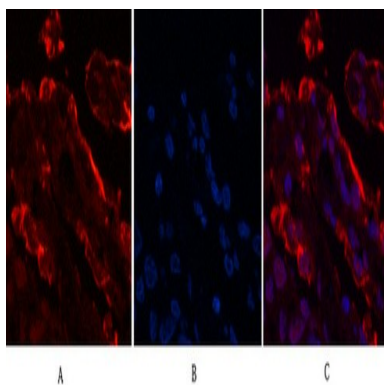


Galactose-specific lectin which binds IgE. May mediate with the alpha-3, beta-1 integrin the stimulation by CSPG4 of endothelial cells migration. Together with DMBT1, required for terminal differentiation of columnar epithelial cells during early embryogenesis.

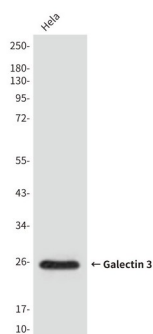
## Research Area

Neuroscience

## Image Data

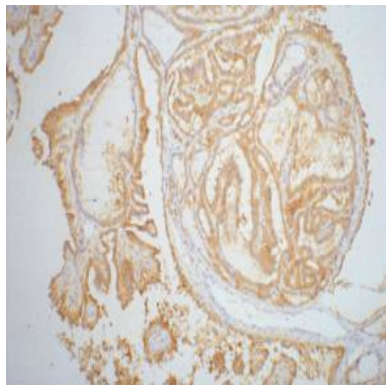


Immunofluorescence analysis of Galectin 3 (4B2) in Human lungcancer tissue using Galectin 3 (4B2) antibody(red),and DAPI (blue).

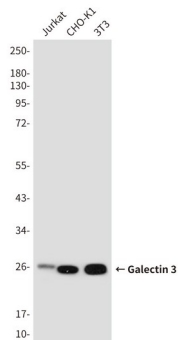


Western blot analysis of Galectin 3 (4B2) in Hela lysates using Galectin 3 (4B2) antibody

**Product Name: Galectin 3 (4B2) Mouse Monoclonal Antibody**  
**Catalog #: AMM03864**



Immunohistochemistry analysis of paraffin-embedded Human thyroid tissue using Galectin 3 (4B2) antibody. High-pressure and temperature Sodium Citrate pH 6.0 was used for antigen retrieval.



Western blot analysis of Galectin 3 (4B2) in Jurkat, CHO-K1, 3T3 lysates using Galectin 3 (4B2) antibody.

## Note

For research use only.