

**Product Name: GRB2 (5G3) Mouse Monoclonal Antibody**  
**Catalog #: AMM03656**

---

## Summary

<b>Production Name</b>	GRB2 (5G3) Mouse Monoclonal Antibody
<b>Description</b>	Primary antibody
<b>Host</b>	Mouse
<b>Application</b>	WB
<b>Reactivity</b>	Human,Mouse,Rat

## Performance

<b>Conjugation</b>	Unconjugated
<b>Modification</b>	Unmodified
<b>Isotype</b>	IgG1
<b>Clonality</b>	Monoclonal Antibody
<b>Form</b>	Liquid
<b>Storage</b>	Store at 4°C short term. Aliquot and store at -20°C long term. Avoid freeze/thaw cycles.
<b>Buffer</b>	Liquid in PBS containing 50% glycerol, 0.5% BSA and 0.02% sodium azide, pH 7.3.
<b>Purification</b>	Affinity Purified

## Immunogen

<b>Gene Name</b>	GRB2
<b>Alternative Names</b>	GRB2; ASH; Growth factor receptor-bound protein 2; Adapter protein GRB2; Protein Ash; SH2/SH3 adapter GRB2
<b>Gene ID</b>	2885
<b>SwissProt ID</b>	P62993

## Application

<b>Dilution Ratio</b>	WB: 1/500-1/1000
<b>Molecular Weight</b>	Calculated MW: 25 kDa; Observed MW: 25 kDa

## Background

---

**Product Name: GRB2 (5G3) Mouse Monoclonal Antibody**  
**Catalog #: AMM03656**

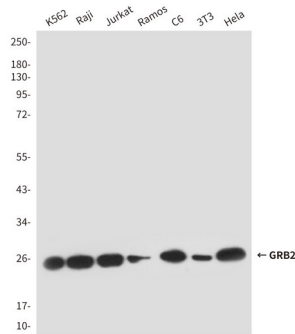
---

Adapter protein that provides a critical link between cell surface growth factor receptors and the Ras signaling pathway.

**Research Area**

Signal Transduction

**Image Data**



Western blot analysis of GRB2 in K562, Raji, Jurkat, Ramos, C6, 3T3 and Hela lysates using GRB2 antibody.

**Note**

For research use only.