

**Product Name: HP1 gamma (6D7) Mouse Monoclonal Antibody**  
**Catalog #: AMM03607**

---



## Summary

<b>Production Name</b>	HP1 gamma (6D7) Mouse Monoclonal Antibody
<b>Description</b>	Primary antibody
<b>Host</b>	Mouse
<b>Application</b>	WB,IHC-P
<b>Reactivity</b>	Human,Rat,Mouse

## Performance

<b>Conjugation</b>	Unconjugated
<b>Modification</b>	Unmodified
<b>Isotype</b>	IgG1
<b>Clonality</b>	Monoclonal Antibody
<b>Form</b>	Liquid
<b>Storage</b>	Store at 4°C short term. Aliquot and store at -20°C long term. Avoid freeze/thaw cycles.
<b>Buffer</b>	Liquid in PBS containing 50% glycerol, 0.5% BSA and 0.02% sodium azide, pH 7.3.
<b>Purification</b>	Affinity Purified

## Immunogen

<b>Gene Name</b>	CBX3
<b>Alternative Names</b>	CBX3; Chromobox protein homolog 3; HECH; Heterochromatin protein 1 homolog gamma; HP1 gamma; Modifier 2 protein
<b>Gene ID</b>	11335
<b>SwissProt ID</b>	Q13185

## Application

<b>Dilution Ratio</b>	WB: 1/500-1/1000 IHC: 1/50-1/100
<b>Molecular Weight</b>	Calculated MW: 21 kDa; Observed MW: 24 kDa

**Product Name: HP1 gamma (6D7) Mouse Monoclonal Antibody**  
**Catalog #: AMM03607**

---



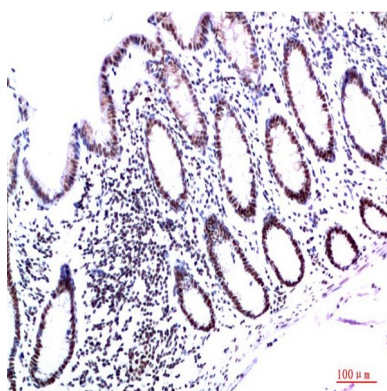
## Background

Recognizes and binds histone H3 tails methylated at 'Lys-9', leading to epigenetic repression. May contribute to the association of the heterochromatin with the inner nuclear membrane through its interaction with lamin B receptor (LBR). Involved in the formation of functional kinetochore through interaction with MIS12 complex proteins.

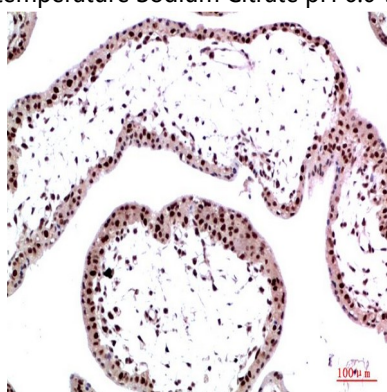
## Research Area

Epigenetics and Nuclear Signaling

## Image Data



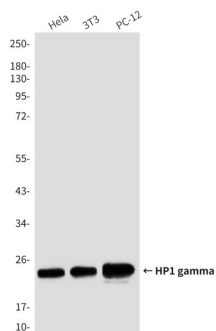
Immunohistochemistry analysis of paraffin-embedded Human Colon Carcinoma Tissue using HP1 gamma (6D7) antibody. High-pressure and temperature Sodium Citrate pH 6.0 was used for antigen retrieval.



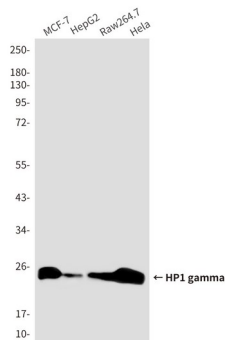
Immunohistochemical analysis of paraffin-embedded Human tonsils using HP1 gamma (6D7) antibody. High-pressure and temperature Sodium Citrate pH 6.0 was used for antigen retrieval.

**Product Name: HP1 gamma (6D7) Mouse Monoclonal Antibody**  
**Catalog #: AMM03607**

---



Western blot analysis of HP1 gamma (6D7) in Hela lysates , 3T3 lysates , PC-12 lysates using HP1 gamma (6D7) antibody



Western blot analysis of HP1 gamma (6D7) in MCF-7, HepG2, Raw264.7, Hela lysates using HP1 gamma (6D7) antibody.

## Note

For research use only.