

**Product Name:** alpha Skeletal Muscle Actin (2B10)  
**Mouse Monoclonal Antibody**  
**Catalog #:** AMM03589

---

## Summary

<b>Production Name</b>	alpha Skeletal Muscle Actin (2B10) Mouse Monoclonal Antibody
<b>Description</b>	Primary antibody
<b>Host</b>	Mouse
<b>Application</b>	WB,IHC-F,IHC-P,ICC/IF,IP
<b>Reactivity</b>	Human,Mouse,Rat

## Performance

<b>Conjugation</b>	Unconjugated
<b>Modification</b>	Unmodified
<b>Isotype</b>	IgG
<b>Clonality</b>	Monoclonal Antibody
<b>Form</b>	Liquid
<b>Storage</b>	Store at 4°C short term. Aliquot and store at -20°C long term. Avoid freeze/thaw cycles.
<b>Buffer</b>	Liquid in PBS containing 50% glycerol, 0.5% BSA and 0.02% sodium azide, pH 7.3.
<b>Purification</b>	Affinity Purified

## Immunogen

<b>Gene Name</b>	ACTA1
<b>Alternative Names</b>	ACTA1; ACTA; Actin; alpha skeletal muscle; Alpha-actin-1
<b>Gene ID</b>	58
<b>SwissProt ID</b>	P68133

## Application

<b>Dilution Ratio</b>	WB: 1/500-1/1000 IHC: 1/50-1/100 IF: 1/50-1/200 IP: 1/20
<b>Molecular Weight</b>	Calculated MW: 42 kDa; Observed MW: 42 kDa

## Background

---

**Product Name: alpha Skeletal Muscle Actin (2B10)**  
**Mouse Monoclonal Antibody**  
**Catalog #: AMM03589**

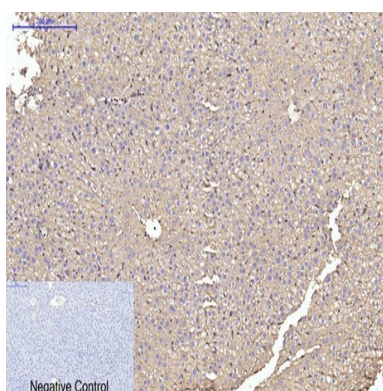


Actins are highly conserved proteins that are involved in various types of cell motility and are ubiquitously expressed in all eukaryotic cells.

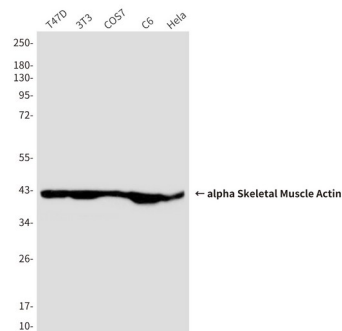
## Research Area

Signal Transduction

## Image Data



Immunohistochemistry analysis of paraffin-embedded rat liver tissue using alpha Skeletal Muscle Actin (2B10) antibody. High-pressure and temperature Sodium Citrate pH 6.0 was used for antigen retrieval. Negative control was used by secondary antibody only.



Western blot analysis of alpha Skeletal Muscle Actin (2B10) in T47D, 3T3, COS7, C6 and Hela lysates using alpha Skeletal Muscle Actin (2B10) antibody

## Note

For research use only.