

Product Name: S100A4 (3D10) Mouse Monoclonal Antibody
Catalog #: AMM03548



Summary

Production Name	S100A4 (3D10) Mouse Monoclonal Antibody
Description	Primary antibody
Host	Mouse
Application	WB,IP
Reactivity	Human

Performance

Conjugation	Unconjugated
Modification	Unmodified
Isotype	IgG1
Clonality	Monoclonal Antibody
Form	Liquid
Storage	Store at 4°C short term. Aliquot and store at -20°C long term. Avoid freeze/thaw cycles.
Buffer	Liquid in PBS containing 50% glycerol, 0.5% BSA and 0.02% sodium azide, pH 7.3.
Purification	Affinity Purified

Immunogen

Gene Name	S100A4 18A2; 42A; calcium Placental protein; Calvasculin; CAPL; Fibroblast specific protein 1; Fibroblast specific protein; FSP1; Leukemia multidrug resistance associated protein; Malignant transformation suppression 1; Metastasin; MTS1; OTTHUMP00000015467;
Alternative Names	OTTHUMP00000015468; P9KA; PEL98; Placental calcium-binding protein; Protein Mts1; Protein S100 A4; Protein S100-A4; S100 calcium binding protein A4 (calcium protein; calvasculin; metastasin; murine placental homolog); S100 calcium binding protein A4; S100 calcium-binding protein A4; S100a4; S10A4_HUMAN.
Gene ID	6275
SwissProt ID	P26447

Application

Product Name: S100A4 (3D10) Mouse Monoclonal Antibody
Catalog #: AMM03548



Dilution Ratio

WB: 1/500-1/1000 IP: 1/20

Molecular Weight

Calculated MW: 12 kDa; Observed MW: 12 kDa

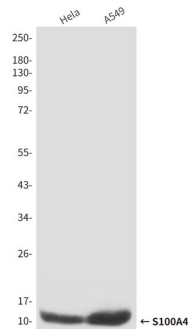
Background

The protein encoded by this gene is a member of the S100 family of proteins containing 2 EF-hand calcium-binding motifs. This protein may function in motility, invasion, and tubulin polymerization. Chromosomal rearrangements and altered expression of this gene have been implicated in tumor metastasis.

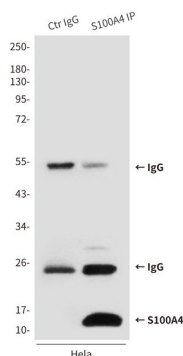
Research Area

Cardiovascular

Image Data



Western blot analysis of S100A4 in HeLa and A549 lysates using S100A4 antibody.



Immunoprecipitation analysis of S100A4 (3D10) in HeLa lysates using S100A4 antibody.

Note

**Product Name: S100A4 (3D10) Mouse Monoclonal
Antibody**
Catalog #: AMM03548



For research use only.