

**Product Name: LIN28A (2C1) Mouse Monoclonal Antibody**  
**Catalog #: AMM03493**

---

## Summary

<b>Production Name</b>	LIN28A (2C1) Mouse Monoclonal Antibody
<b>Description</b>	Primary antibody
<b>Host</b>	Mouse
<b>Application</b>	WB
<b>Reactivity</b>	Human,Mouse

## Performance

<b>Conjugation</b>	Unconjugated
<b>Modification</b>	Unmodified
<b>Isotype</b>	IgG2a
<b>Clonality</b>	Monoclonal Antibody
<b>Form</b>	Liquid
<b>Storage</b>	Store at 4°C short term. Aliquot and store at -20°C long term. Avoid freeze/thaw cycles.
<b>Buffer</b>	Liquid in PBS containing 50% glycerol, 0.5% BSA and 0.02% sodium azide, pH 7.3.
<b>Purification</b>	Affinity Purified

## Immunogen

<b>Gene Name</b>	LIN28A
<b>Alternative Names</b>	CSDD1; FLJ12457; LIN 28; Lin-28A; LIN28; LIN28A; LN28A_HUMAN; Protein lin-28 homolog A; ZCCHC1; Zinc finger CCHC domain-containing protein 1.
<b>Gene ID</b>	79727
<b>SwissProt ID</b>	Q9H9Z2

## Application

<b>Dilution Ratio</b>	WB: 1/500-1/1000
<b>Molecular Weight</b>	Calculated MW: 23 kDa; Observed MW: 26 kDa

**Product Name: LIN28A (2C1) Mouse Monoclonal Antibody**  
**Catalog #: AMM03493**

---

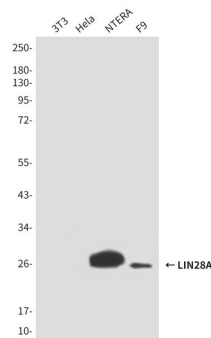
## Background

Involved in the timing of developmental events and choice of stage specific cell fates. Acts as a suppressor of microRNA (miRNA) biogenesis by specifically binding the precursor let-7 (pre-let-7), a miRNA precursor. Acts by binding pre-let-7 and recruiting ZCCHC11/TUT4 uridylyltransferase, leading to the terminal uridylation of pre-let-7.

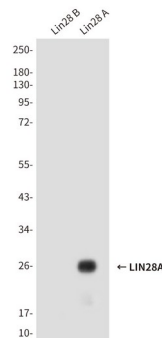
## Research Area

Epigenetics and Nuclear Signaling

## Image Data



Western blot analysis of LIN28 in NTERA and F9 lysates using LIN28A antibody.



Western blot analysis of LIN28A (2C1) in LIN28B and LIN28A recombinant antigen fragments using LIN28A antibody.

## Note

For research use only.