

**Product Name: HP1 alpha (3G2) Mouse Monoclonal Antibody**  
**Catalog #: AMM03419**

---

## Summary

<b>Production Name</b>	HP1 alpha (3G2) Mouse Monoclonal Antibody
<b>Description</b>	Primary antibody
<b>Host</b>	Mouse
<b>Application</b>	WB,IHC-F,IHC-P,ICC/IF
<b>Reactivity</b>	Human,Mouse,Rat

## Performance

<b>Conjugation</b>	Unconjugated
<b>Modification</b>	Unmodified
<b>Isotype</b>	IgG2b
<b>Clonality</b>	Monoclonal Antibody
<b>Form</b>	Liquid
<b>Storage</b>	Store at 4°C short term. Aliquot and store at -20°C long term. Avoid freeze/thaw cycles.
<b>Buffer</b>	Liquid in PBS containing 50% glycerol, 0.5% BSA and 0.02% sodium azide, pH 7.3.
<b>Purification</b>	Affinity Purified

## Immunogen

<b>Gene Name</b>	CBX5
<b>Alternative Names</b>	CBX5; HP1A; Chromobox protein homolog 5; Antigen p25; Heterochromatin protein 1 homolog alpha; HP1 alpha
<b>Gene ID</b>	23468
<b>SwissProt ID</b>	P45973

## Application

<b>Dilution Ratio</b>	WB: 1/500-1/1000 IHC: 1/50-1/100 IF: 1/50-1/200
<b>Molecular Weight</b>	Calculated MW: 22 kDa; Observed MW: 26 kDa

**Product Name: HP1 alpha (3G2) Mouse Monoclonal Antibody**  
**Catalog #: AMM03419**



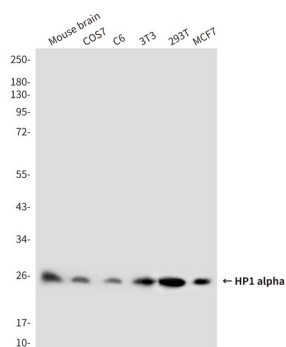
## Background

Component of heterochromatin that recognizes and binds histone H3 tails methylated at 'Lys-9' (H3K9me), leading to epigenetic repression. In contrast, it is excluded from chromatin when 'Tyr-41' of histone H3 is phosphorylated (H3Y41ph). Can interact with lamin-B receptor (LBR). This interaction can contribute to the association of the heterochromatin with the inner nuclear membrane. Involved in the formation of functional kinetochore through interaction with MIS12 complex proteins.

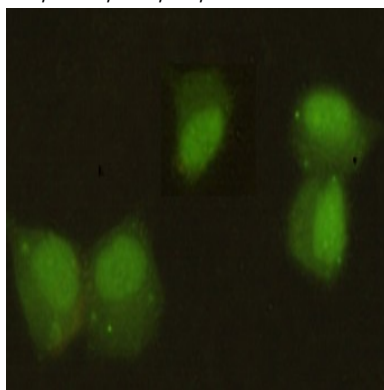
## Research Area

Epigenetics and Nuclear Signaling

## Image Data



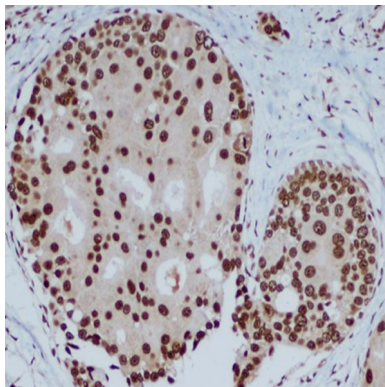
Western blot analysis of HP1 alpha in MCF-7, 293T, 3T3, C6, COS7 and mouse brain lysates using HP1 alpha antibody.



Immunocytochemistry analysis of HP1 alpha (3G2) in HeLa using HP1 alpha antibody.

**Product Name: HP1 alpha (3G2) Mouse Monoclonal Antibody**  
**Catalog #: AMM03419**

---



Immunohistochemistry analysis of paraffin-embedded Human breast carcinoma using HP1 alpha antibody(3G2).High-pressure and temperature Sodium Citrate pH 6.0 was used for antigen retrieval.

#### **Note**

For research use only.