

**Product Name: Pyruvate Dehydrogenase E2 Mouse  
Monoclonal Antibody  
Catalog #: AMM00969**

---



## Summary

<b>Production Name</b>	Pyruvate Dehydrogenase E2 Mouse Monoclonal Antibody
<b>Description</b>	Primary antibody
<b>Host</b>	Mouse
<b>Application</b>	WB, ICC/IF, IP
<b>Reactivity</b>	Human, Monkey

## Performance

<b>Conjugation</b>	Unconjugated
<b>Modification</b>	Unmodified
<b>Isotype</b>	IgG1
<b>Clonality</b>	Monoclonal Antibody
<b>Form</b>	Liquid
<b>Storage</b>	Store at 4°C short term. Aliquot and store at -20°C long term. Avoid freeze/thaw cycles.
<b>Buffer</b>	Liquid in PBS containing 50% glycerol, 0.5% BSA and 0.02% sodium azide, pH 7.3.
<b>Purification</b>	Affinity Purified

## Immunogen

<b>Gene Name</b>	DLAT
<b>Alternative Names</b>	DLAT; DLTA; E2; PBC; PDCE2
<b>Gene ID</b>	1737
<b>SwissProt ID</b>	P10515

## Application

<b>Dilution Ratio</b>	WB: 1/500-1/1000 IF: 1/50-1/200 IP: 1/20
<b>Molecular Weight</b>	Calculated MW: 69 kDa; Observed MW: 69 kDa

## Background

---

**Product Name: Pyruvate Dehydrogenase E2 Mouse  
Monoclonal Antibody  
Catalog #: AMM00969**

---

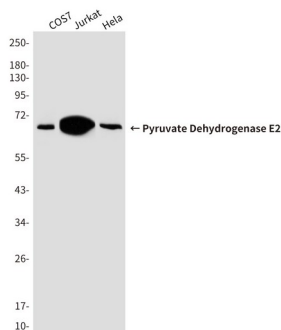


The pyruvate dehydrogenase complex catalyzes the overall conversion of pyruvate to acetyl-CoA and CO<sub>2</sub>. It contains multiple copies of three enzymatic components: pyruvate dehydrogenase (E1), dihydrolipoamide acetyltransferase (E2) and lipoamide dehydrogenase (E3).

## Research Area

Signal Transduction

## Image Data



Western blot analysis of Pyruvate Dehydrogenase E2 in COS7, Jurkat and HeLa lysates using Pyruvate Dehydrogenase E2 antibody.

## Note

For research use only.