

**Product Name: gamma Tubulin (6A10) Mouse
Monoclonal Antibody
Catalog #: AMM00892**

Summary

Production Name	gamma Tubulin (6A10) Mouse Monoclonal Antibody
Description	Primary antibody
Host	Mouse
Application	WB,IHC-P
Reactivity	Human,Rat,Mouse

Performance

Conjugation	Unconjugated
Modification	Unmodified
Isotype	IgG1
Clonality	Monoclonal Antibody
Form	Liquid
Storage	Store at 4°C short term. Aliquot and store at -20°C long term. Avoid freeze/thaw cycles.
Buffer	Liquid in PBS containing 50% glycerol, 0.5% BSA and 0.02% sodium azide, pH 7.3.
Purification	Affinity Purified

Immunogen

Gene Name	TUBG1
Alternative Names	TUBG1; TUBG; Tubulin gamma-1 chain; Gamma-1-tubulin; Gamma-tubulin complex component 1; GCP-1
Gene ID	7283
SwissProt ID	P23258

Application

Dilution Ratio	WB: 1/500-1/1000 IHC: 1/50-1/100
Molecular Weight	Calculated MW: 51 kDa; Observed MW: 51 kDa

**Product Name: gamma Tubulin (6A10) Mouse
Monoclonal Antibody
Catalog #: AMM00892**

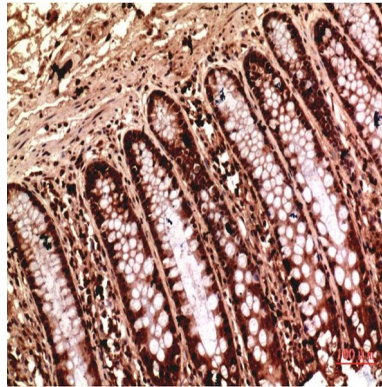
Background

TUBG1 Tubulin is the major constituent of microtubules. Gamma tubulin is found at microtubule organizing centers (MTOC) such as the spindle poles or the centrosome. Pericentriolar matrix component that regulates alpha/beta tubulin minus-end nucleation, centrosome duplication and spindle formation. Interacts with GCP2 and GCP3. Interacts with B9D2. Interacts with CDK5RAP2;

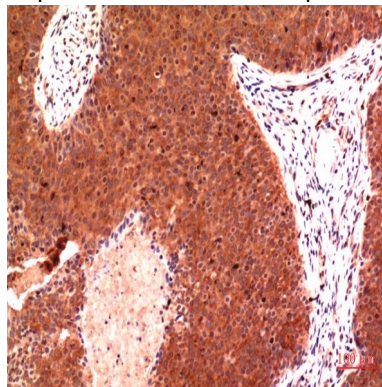
Research Area

Signal Transduction

Image Data

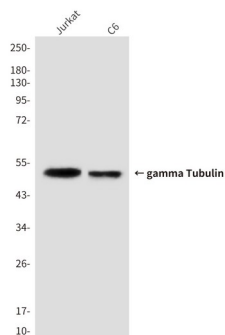


Immunohistochemistry analysis of paraffin-embedded Human Colon Carcinoma Tissue using gamma Tubulin (6A10) antibody. High-pressure and temperature Sodium Citrate pH 6.0 was used for antigen retrieval.

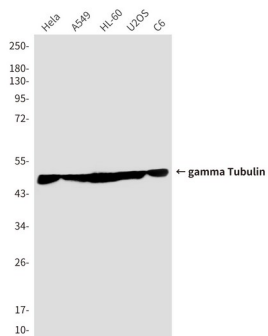


Immunohistochemical analysis of paraffin-embedded Human tonsils using gamma Tubulin (6A10) antibody. High-pressure and temperature Sodium Citrate pH 6.0 was used for antigen retrieval.

**Product Name: gamma Tubulin (6A10) Mouse
Monoclonal Antibody
Catalog #: AMM00892**



Western blot analysis of gamma Tubulin (6A10) in Jurkat, C6 lysates using gamma Tubulin (6A10) antibody



Western blot analysis of gamma Tubulin (6A10) in HeLa, A549, HL-60, U2OS, C6 lysates using gamma Tubulin (6A10) antibody.

Note

For research use only.