

Product Name: beta I Tubulin (1H10) Mouse Monoclonal Antibody
Catalog #: AMM00879

Summary

| | |
|------------------------|---|
| Production Name | beta I Tubulin (1H10) Mouse Monoclonal Antibody |
| Description | Primary antibody |
| Host | Mouse |
| Application | WB,IHC-F,IHC-P,ICC/IF |
| Reactivity | Human,Rat,Mouse |

Performance

| | |
|---------------------|--|
| Conjugation | Unconjugated |
| Modification | Unmodified |
| Isotype | IgG1 |
| Clonality | Monoclonal Antibody |
| Form | Liquid |
| Storage | Store at 4°C short term. Aliquot and store at -20°C long term. Avoid freeze/thaw cycles. |
| Buffer | Liquid in PBS containing 50% glycerol, 0.5% BSA and 0.02% sodium azide, pH 7.3. |
| Purification | Affinity Purified |

Immunogen

| | |
|--------------------------|--|
| Gene Name | TUBB1 |
| Alternative Names | beta I tubulin; TBB1; TUBB1; Tubulin beta 1; Class VI beta tubulin |
| Gene ID | 81027 |
| SwissProt ID | Q9H4B7 |

Application

| | |
|-------------------------|---|
| Dilution Ratio | WB: 1/500-1/1000 IHC: 1/50-1/100 IF: 1/50-1/200 |
| Molecular Weight | Calculated MW: 50 kDa; Observed MW: 50 kDa |

Background

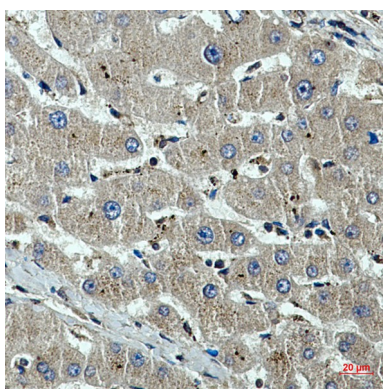
Product Name: beta I Tubulin (1H10) Mouse Monoclonal Antibody
Catalog #: AMM00879

Tubulin is the major constituent of microtubules. It binds two moles of GTP, one at an exchangeable site on the beta chain and one at a non-exchangeable site on the alpha chain (By similarity).

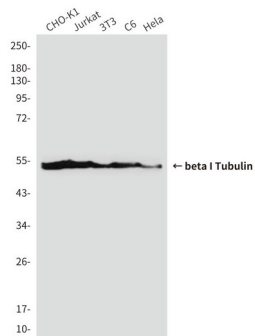
Research Area

Signal Transduction

Image Data

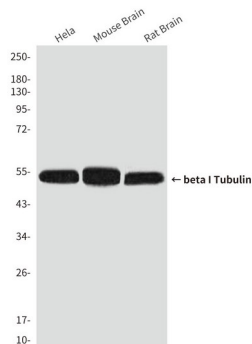


Immunohistochemistry analysis of paraffin-embedded beta I Tubulin in Human liver cancer using beta I Tubulin (1H10) antibody. High-pressure and temperature Sodium Citrate pH 6.0 was used for antigen retrieval.

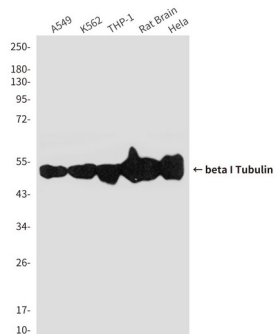


Western blot analysis of beta I Tubulin (1H10) in CHO-K1, Jurkat, 3T3, C6 and Hela lysates using beta I Tubulin (1H10) antibody

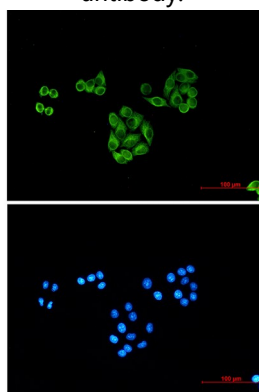
Product Name: beta I Tubulin (1H10) Mouse Monoclonal Antibody
Catalog #: AMM00879



Western blot analysis of beta I Tubulin (1H10) in HeLa, mouse Brain Tissue, rat Brain Tissue lysates using beta I Tubulin (1H10) antibody



Western blot analysis of beta I Tubulin (1H10) in A549, K562, THP-1, rat Brain, HeLa lysates using beta I Tubulin (1H10) antibody.



Immunocytochemistry analysis of beta I Tubulin (1H10) (green) in HeLa using beta I Tubulin (1H10) antibody, and DAPI (blue)

Note

For research use only.