

**Product Name: Rabbit IgG H&L (10D2) Mouse
Monoclonal Antibody
Catalog #: AMM00874**

Summary

Production Name	Rabbit IgG H&L (10D2) Mouse Monoclonal Antibody
Description	Primary antibody
Host	Mouse
Application	WB
Reactivity	Rabbit

Performance

Conjugation	Unconjugated
Modification	Unmodified
Isotype	IgG1
Clonality	Monoclonal Antibody
Form	Liquid
Storage	Store at 4°C short term. Aliquot and store at -20°C long term. Avoid freeze/thaw cycles.
Buffer	Liquid in PBS containing 50% glycerol, 0.5% BSA and 0.02% sodium azide, pH 7.3.
Purification	Affinity Purified

Immunogen

Gene Name	Rabbit IgG
Alternative Names	Antibody; Ig gamma chain C region; Ig kappa-b4 chain C region; Ig kappa-b5 chain C region; Ig kappa-b9 chain C region; Ig lambda chain C region; K-BAS.
Gene ID	-
SwissProt ID	-

Application

Dilution Ratio	WB: 1/500-1/1000
Molecular Weight	Calculated MW: 25,55 kDa; Observed MW: 25,55 kDa

**Product Name: Rabbit IgG H&L (10D2) Mouse
Monoclonal Antibody
Catalog #: AMM00874**



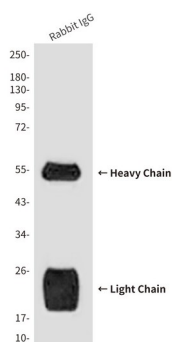
Background

Constant region of immunoglobulin heavy chains. Immunoglobulins, also known as antibodies, are membrane-bound or secreted glycoproteins produced by B lymphocytes.

Research Area

Immunology

Image Data



Western blot analysis of Reduced Rabbit IgG, H+L using Rabbit IgG H&L (10D2) antibody.

Note

For research use only.