

**Product Name:** beta I Tubulin (8E6) Mouse Monoclonal Antibody  
**Catalog #:** AMM00871

---



## Summary

<b>Production Name</b>	beta I Tubulin (8E6) Mouse Monoclonal Antibody
<b>Description</b>	Primary antibody
<b>Host</b>	Mouse
<b>Application</b>	WB
<b>Reactivity</b>	Zebrafish

## Performance

<b>Conjugation</b>	Unconjugated
<b>Modification</b>	Unmodified
<b>Isotype</b>	IgG1
<b>Clonality</b>	Monoclonal Antibody
<b>Form</b>	Liquid
<b>Storage</b>	Store at 4°C short term. Aliquot and store at -20°C long term. Avoid freeze/thaw cycles.
<b>Buffer</b>	Liquid in PBS containing 50% glycerol, 0.5% BSA and 0.02% sodium azide, pH 7.3.
<b>Purification</b>	Affinity Purified

## Immunogen

<b>Gene Name</b>	TUBB1
<b>Alternative Names</b>	beta I tubulin; TBB1; TUBB1; Tubulin beta 1; Class VI beta tubulin
<b>Gene ID</b>	81027
<b>SwissProt ID</b>	Q9H4B7

## Application

<b>Dilution Ratio</b>	WB: 1/500-1/1000
<b>Molecular Weight</b>	Calculated MW: 50 kDa; Observed MW: 50 kDa

## Background

---

**Product Name: beta I Tubulin (8E6) Mouse Monoclonal Antibody**  
**Catalog #: AMM00871**

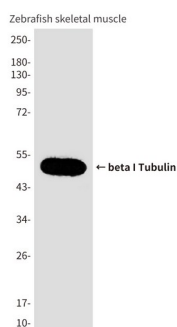


Tubulin is the major constituent of microtubules. It binds two moles of GTP, one at an exchangeable site on the beta chain and one at a non-exchangeable site on the alpha chain (By similarity).

## Research Area

Signal Transduction

## Image Data



Western blot analysis of beta I Tubulin in Zebrafish skeletal muscle lysates using beta I Tubulin (8E6) antibody.

## Note

For research use only.