

**Product Name: epsilon Tubulin (7D3) Mouse
Monoclonal Antibody
Catalog #: AMM00756**

Summary

Production Name	epsilon Tubulin (7D3) Mouse Monoclonal Antibody
Description	Primary antibody
Host	Mouse
Application	IHC-P
Reactivity	Human,Rat,Mouse

Performance

Conjugation	Unconjugated
Modification	Unmodified
Isotype	IgG1
Clonality	Monoclonal Antibody
Form	Liquid
Storage	Store at 4°C short term. Aliquot and store at -20°C long term. Avoid freeze/thaw cycles.
Buffer	Liquid in PBS containing 50% glycerol, 0.5% BSA and 0.02% sodium azide, pH 7.3.
Purification	Affinity Purified

Immunogen

Gene Name	TUBE1
Alternative Names	FLJ22589; TUBE1; tubulin epsilon 1; ε tubulin
Gene ID	51175
SwissProt ID	Q9UJT0

Application

Dilution Ratio	IHC: 1/50-1/100
Molecular Weight	-

Background

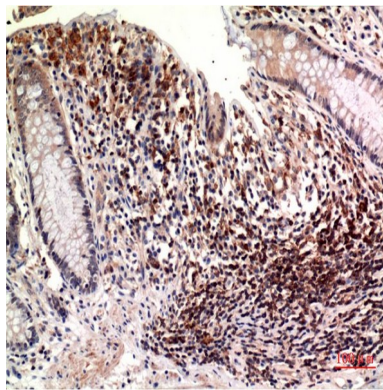
**Product Name: epsilon Tubulin (7D3) Mouse
Monoclonal Antibody
Catalog #: AMM00756**

This gene encodes a member of the tubulin superfamily. This protein localizes to the centriolar sub-distal appendages that are associated with the older of the two centrioles after centrosome duplication. This protein plays a central role in organization of the microtubules during centriole duplication. A pseudogene of this gene is found on chromosome 5.

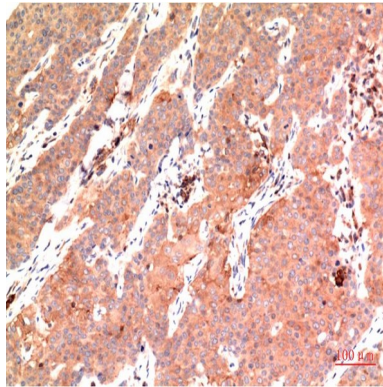
Research Area

Signal Transduction

Image Data



Immunohistochemistry analysis of paraffin-embedded Human Colon Carcinoma Tissue using epsilon Tubulin (7D3) antibody. High-pressure and temperature Sodium Citrate pH 6.0 was used for antigen retrieval.



Immunohistochemical analysis of paraffin-embedded Human tonsils using epsilon Tubulin (7D3) antibody. High-pressure and temperature Sodium Citrate pH 6.0 was used for antigen retrieval.

Note

For research use only.